

Looking at 17th Century Dutch Paintings

Fall 2020 – An online exhibition

Balthasar van der Ast, Dutch, 1593/4–1657

Still Life with Shells, Fruit, and Flowers, ca. 1630–40

Oil on wood panel

24.1 x 32.3 cm (9 1/2 x 12 11/16 in.)

frame: 41.3 x 49.2 x 5.1 cm (16 1/4 x 19 3/8 x 2 in.)

Anonymous gift

y1994-77



Bartholomeus Breenbergh, Dutch, 1598–1657

Saints Paul and Barnabas at Lystra (Sacrifice at Lystra), 1637

Oil on wood panel

69.5 x 92 cm (27 3/8 x 36 1/4 in.)

frame: 89.9 x 112.7 x 6 cm (35 3/8 x 44 3/8 x 2 3/8 in.)

Museum purchase, Fowler McCormick, Class of 1921, Fund 2006-46



Cornelis Cornelisz. van Haarlem, Dutch, 1562–1638

Israelites Crossing the Red Sea, 1594

Oil on wood panel

42 x 103 cm (16 9/16 x 40 9/16 in.)

frame: 55.9 x 116.2 x 4.1 cm (22 x 45 3/4 x 1 5/8 in.)

Museum purchase, gift of George L. Craig Jr., Class of 1921, and Mrs. Craig

y1973-74



Cornelis Cornelisz. van Haarlem, Dutch, 1562–1638

Meeting of Jacob and Esau, 1594

Oil on wood panel

42.7 x 103 cm (16 13/16 x 40 9/16 in.)

frame: 56 x 115.5 x 4 cm (22 1/16 x 45 1/2 x 1 9/16 in.)

Museum purchase, gift of George L. Craig Jr., Class of 1921, and Mrs. Craig

y1973-75



Cornelis Cornelisz. van Haarlem, Dutch, 1562–1638

A Courting Couple and Woman with a Songbook, ca. 1594

Oil on canvas

85.7 x 95.3 cm (33 3/4 x 37 1/2 in.)

frame: 107.9 x 117.2 x 12.4 cm (42 1/2 x 46 1/8 x 4 7/8 in.)

Museum purchase, partial gift of Mr. H. Kelley Rollings, Class of 1948, and Mrs. Rollings 1997-102



Gerrit Dou, Dutch, 1613–1675

The Penitent Magdalen, ca. 1660–65

Oil on panel

25.4 x 18.7 cm (10 x 7 3/8 in.)

frame: 38.1 x 31.7 cm (15 x 12 1/2 in.)

Museum purchase, Fowler McCormick, Class of 1921, Fund 2019-261



Unidentified Dutch artist

formerly attributed to Jacob Gerritsz. Cuypp, Dutch, 1594–ca. 1651

Portrait of a Man, 1642

Oil on wood panel

72.9 x 59.3 cm. (28 11/16 x 23 3/8 in.)

frame: 94.5 x 84 x 4 cm (37 3/16 x 33 1/16 x 1 9/16 in.)

Gift of Dr. Alfred A. Azzoni and Dr. Janet Elderkin Azzoni in memory of Professor George W. Elderkin y1992-15



Jan van Haensbergen, Dutch, 1642–1705

formerly attributed to Cornelis van Poelenburch, Dutch, 1586/94–1667

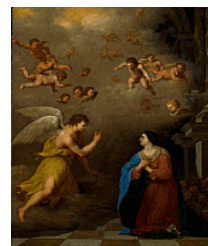
Annunciation of the Death of the Virgin, 1660s

Oil on wood panel

39.1 x 29.5 cm (15 3/8 x 11 5/8 in.)

frame: 48.5 x 40.5 x 3 cm (19 1/8 x 15 15/16 x 1 3/16 in.)

Gift of Deborah Strom Gibbons, Graduate School Class of 1979 y1994-12



Gillis de Hondecoeter, Dutch, ca. 1575–1638

A Mountainous River Landscape with Tobias and the Angel, ca. 1618

Oil on wood panel

30.7 x 45.5 cm (12 1/16 x 17 15/16 in.)

frame: 46 x 61 x 6 cm (18 1/8 x 24 x 2 3/8 in.)

Gift of Lynch and Mayer, Inc. (Eldon C. Mayer Jr., Class of 1957)

y1985-3



Jan van Huysum, Dutch, 1682–1749

A Vase of Flowers, ca. 1730–35

Oil on wood panel

81 x 60 cm (31 7/8 x 23 5/8 in.)

frame: 111.1 x 90.2 x 16.2 cm (43 3/4 x 35 1/2 x 6 3/8 in.)

Lent anonymously from the J.B. Robinson Collection

L.1991.1.2



Ludolf de Jongh, Dutch, 1616–1679

Scene in a Formal Garden, 1676

Oil on canvas

82 x 106.5 cm. (32 5/16 x 41 15/16 in.)

frame: 134.3 x 109.5 x 10.8 cm. (52 7/8 x 43 1/8 x 4 1/4 in.)

Lent anonymously from the J.B. Robinson Collection

L.1991.1.3



Cornelis Jonson van Ceulen I, Dutch, born in England, 1593–1661

Portrait of a Woman, ca. 1655–56

Oil on canvas

102.1 x 82.1 cm (40 3/16 x 32 5/16 in.)

frame: 126.7 x 106.7 x 4.1 cm (49 7/8 x 42 x 1 5/8 in.)

Gift of Marco Grassi, Class of 1956, and Cristina Grassi

y1984-67



Paulus Moreelse, Dutch, 1571–1638

Shepherdess, 1633

Oil on canvas

73.5 x 67.5 cm (28 15/16 x 26 9/16 in.)

frame: 97.5 x 92.4 x 8.3 cm (38 3/8 x 36 3/8 x 3 1/4 in.)

Museum purchase

y1954-130



Aert van der Neer, Dutch, ca. 1603/04–1677

River Landscape in Moonlight, ca. 1645–55

Oil on canvas

48.3 x 63 cm (19 x 24 13/16 in.)

frame: 64 x 79 x 5 cm (25 3/16 x 31 1/8 x 1 15/16 in.)

Gift of Edwin H. Herzog, Class of 1921

y1959-134



Jacob Lucasz. Ochtervelt, Dutch, 1634–1682

A Nurse Showing a Mother Her Child, 1671–78

Oil on canvas

92.5 x 75 cm. (36 7/16 x 29 1/2 in.)

frame: 132.7 x 115.6 x 7 cm. (52 1/4 x 45 1/2 x 2 3/4 in.)

Lent anonymously from the J.B. Robinson Collection

L.1991.1.4



Antonie Palamedesz, Dutch, 1601–1673

Portrait of a Lady, 1654

Oil on canvas

82.5 x 68 cm (32 1/2 x 26 3/4 in.)

frame: 110 x 94.6 x 5.4 cm (43 5/16 x 37 1/4 x 2 1/8 in.)

Bequest of Carl Otto von Kienbusch, Class of 1906, for the Carl Otto von Kienbusch Jr.

Memorial Collection

y1977-31



Jacques de Rousseau, Dutch, ca. 1600–1638
Old Man in Prayer Contemplating a Skull, 1630–35
Oil on canvas
100.1 x 73 cm (39 7/16 x 28 3/4 in.)
frame: 126.2 x 99.5 x 11.7 cm (49 11/16 x 39 3/16 x 4 5/8 in.)
Gift of the Schorr Family Collection in honor of Allen Rosenbaum
2005-250



Jacob van Ruisdael, Dutch, 1628/29–1682
Forest Landscape, ca. 1650
Oil on canvas
61.6 x 54 x 2.2 cm (24 1/4 x 21 1/4 x 7/8 in.)
frame: 98 x 90.3 x 12.5 cm (38 9/16 x 35 9/16 x 4 15/16 in.)
Gift of Elias Wolf, Class of 1920, and Mrs. Wolf
y1979-46



Salomon van Ruysdael, Dutch, ca. 1602–1670
View of Dordrecht, ca. 1660
Oil on wood panel
34.5 x 61 cm (13 9/16 x 24 in.)
frame: 58.4 x 85.4 x 4.8 cm (23 x 33 5/8 x 1 7/8 in.)
Bequest of Brooks Emeny, Class of 1924
y1980-13



Unidentified artist
formerly attributed to Juriaen van Streeck, Dutch, 1632–1687
Still Life, n.d.
Oil on canvas
39.5 x 31.5 cm (15 9/16 x 12 3/8 in.)
frame: 55.9 x 48.6 x 7.6 cm (22 x 19 1/8 x 3 in.)
Museum purchase
y1954-129



Jan van Goyen, Dutch, 1596–1656
formerly attributed to Pieter de Neyn, Dutch, 1597–1639
Dune Landscape, ca. 1632
Oil on wood panel
43.7 x 60 cm (17 3/16 x 23 5/8 in.)
frame: 65.5 x 81 x 5 cm (25 13/16 x 31 7/8 x 1 15/16 in.)
Gift of Joseph F. McCrindle
y1969-74

